

# CHAMOT

## Recombinant Human BAFF

CM050-5HP  
CM050-20HP  
CM050-100HP  
CM050-500HP  
CM050-1000HP



CHAMOT

喬默生物技術(上海)有限公司  
CHAMOT BIOTECHNOLOGY CO., LTD.

# CONTENT

**1** 产品简介

**2** 产品组成

**3** 产品储存

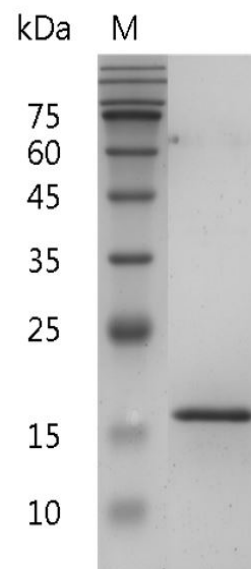
**4** 产品使用

## Recombinant Human BAFF (B-cell activating factor)

|     |   |     |   |
|-----|---|-----|---|
| 编号: | CM050-5HP<br>CM050-20HP<br>CM050-100HP<br>CM050-500HP<br>CM050-1000HP | 规格: | 5 µg<br>20 µg<br>100 µg<br>500 µg<br>1 mg |
| 类别: | 重组蛋白  | 应用: | Functional Assay                          |

### 产品简介

**描述:** B-cell activating factor (BAFF) also known as tumor necrosis factor ligand superfamily member 13B is a protein, that in humans, is encoded by the TNFSF13B gene. BAFF is also known as B Lymphocyte Stimulator (BLyS) and TNF- and APOL-related leukocyte expressed ligand (TALL-1) and the Dendritic cell-derived TNF-like molecule. BAFF is a cytokine that belongs to the tumor necrosis factor (TNF) ligand family. This cytokine is expressed in B cell lineage cells, and acts as a potent B cell activator. It has been also shown to play an important role in the proliferation and differentiation of B cells.



SDS-PAGE analysis of recombinant human BAFF

**来源:** *Escherichia coli*

**纯度:** >98% as determined by SDS-PAGE. Ni-NTA chromatography.

**生物学活性:** Measure by its ability to induce IL-8 secretion in human PBMCs. The ED<sub>50</sub> for this effect is <0.5 ng/mL.

**内毒素检测:** <0.1 EU per 1 µg of the protein by the LAL method.

**蛋白序列:** MAVQGPEETVTQDCLQLIADSETPTI  
QKGSYTFVPWLLSFKRGSAALEEKENKI  
LVKETGYFFIYGQVLYTDKTYAMGHIL  
QRKKVHVFGDELSLVTLFRCIQNMPE  
TLPNNSCYSAGIAKLEEGDELQLAIPRE  
NAQISLDGDVTFFGALKLL with  
polyhistidine tag at the C-terminus

## 产品组成

成分：从含有 1X PBS, pH 8.0 溶液中冻干的蛋白质.

## 产品储存/运输

| 产品形式      | 储存温度        | 储存时间     |
|-----------|-------------|----------|
| 冻干粉       | -20°C至-80°C | 自收到之日起1年 |
| 重悬液 (初始)  | 2°C至8°C     | 不超过1周    |
| 重悬液 (经稀释) | -20°C至-80°C | 3到6个月    |

运输方式：蓝冰

## 产品使用

- 1、开盖前，建议3000-3500rpm离心5min。
- 2、推荐使用无菌水重悬冻干粉，溶液浓度不低于100 $\mu$ g/mL，不高于1mg/mL，并室温静置至少20min以充分溶解。勿涡旋剧烈振荡。
- 3、重悬后的溶液，2-8°C无菌保存不超过1周。
- 4、如需长期保存，推荐使用无菌的含载体蛋白（如0.1%BSA、10%FBS 或5%HSA）的溶液进一步稀释（不低于10 $\mu$ g/mL）后分装保存，-20°C至-80°C无菌保存3到6个月。无血清实验需求时，可更换为5%海藻糖溶液作为载体。避免反复冻融。

WB= Western Blot; IP= Immunoprecipitation; IF= Immunofluorescence; IHC= Immunohistochemistry;  
FACS= Fluorescence activated Cell Sorting; FA= Functional Assay